



INTERCONTINENTAL[®]
SINGAPORE



WELCOME TO SINGAPORE

SINGAPORE



INTRODUCTION

A luxury landmark set in the heart of a historic precinct, InterContinental Singapore is deeply rooted in the heritage of the arts and cultural districts of Bugis and Bras Basah. Drawing on the city's rich legacy and multifaceted culture inspired by the surrounding locale, the 403-guestroom hotel exudes a residential charm that harmoniously marries luxury and elegance with hints of locality.

HOTEL FACILITIES

From dining options and recreational activities, to business and meeting requirements, our suite of services and facilities are designed to cater to your every need.

Hotel facilities include:

- Club InterContinental lounge
- Outdoor swimming pool
- Fitness centre
- Yoga room
- Concierge
- Business centre
- Food and Beverage venues including LUCE, Man Fu Yuan, The Lobby Lounge, Chikuyotei and Quaich Bar Wanderlust



LOCATION

Located in Singapore's arts and cultural district of Bugis and Bras Basah, InterContinental Singapore is directly connected to Bugis Mass Rapid Transit (MRT) station. The hotel is also a 20 minute drive from Changi International Airport and is 5 minutes by car from Orchard Road and the Central Business District.

SINGAPORE



SANCTUARY IN THE CITY

Exuding elegant charm with accents of Singapore's rich heritage, the 403 spacious guestrooms and suites feature plush beddings, custom furnishings and well-appointed amenities. Luxuriate in the natural light-filled interiors of guestrooms in the Main Tower, or experience shophouse living in the Heritage Wing, inspired by the homes of the Straits Chinese population of Singapore. Each room contains:

- Down feather duvet and pillows
- Laundry, mending and shoeshine services
- High-speed wired and wireless internet connectivity
- Coffee and tea facilities



ELEVATED LUXURY

Club InterContinental, hallmark of the InterContinental experience, offers a private enclave of luxury, sophistication, and tranquility. From personalised pre-arrival arrangements to tailored experiences, the dedicated Club InterContinental team curates an experience that mirrors the guests' individuality and provides an unrivalled experience in the cultural, wellness and dining realm.

- Daily culinary indulgences including breakfast, afternoon tea and evening cocktails and canapes
- A premium selection of coffee and loose-leaf tea throughout the day
- 20% savings on all laundry services

SINGAPORE



SIGNATURE BUTLER SERVICE

Indulge in the ultimate luxury and personalised attention with InterContinental Singapore's signature Butler service. Designed to cater to the discerning needs of our esteemed guests, our exceptional Butler services offer a hyper-personalised, end-to-end experience that begins even before you arrive.

From a personalised welcome by your Butler, to a private off-site dining experience, the Butler team is adept at handling any request with grace and efficiency. Indulge in unparalleled dining experiences with bespoke menu curations personalised by the hotel's Culinary Team, and the very best of the Club InterContinental lounge offerings throughout your stay.

Butler service is now available for guests of InterContinental Singapore's One-Bedroom Suites, Royal Suites, Ambassadors Suites and Presidential Suite.



SINGAPORE



RESTAURANTS & BAR

Discover a world of gourmet delights at InterContinental Singapore, from contemporary Chinese cuisine at Man Fu Yuan and Italian delicacies at LUCE, to an indulgent afternoon tea experience with bespoke cocktails at The Lobby Lounge.

LUCE

Indulge in a unique culinary experience at LUCE, where a carefully curated buffet brings together authentic Italian cuisine and a diverse range of international dishes. The menu presents a perfect balance of fresh and genuine flavours that caters to every palate, complemented with a bespoke Italian à la carte menu for a tailored dining adventure. Embark on an unforgettable journey to celebrate the harmony of Italian tradition and global gastronomy. Every occasion at LUCE into more than just a meal — a memorable event of culinary delight and sophistication.

Man Fu Yuan

Lauded as one of Singapore's best Chinese restaurants and recipient of the Michelin Plate, Man Fu Yuan is a stalwart in the Cantonese fine dining scene in Singapore, serving culinary presentations that showcase an artful balance of modern flavours with traditional Cantonese craftsmanship. Look forward to a refined dining experience underpinned by authentic Chinese culinary techniques with a touch of modernity, and elevate your experience with a handpicked selection of quality wines or premium tea pairings.

The Lobby Lounge

The charming centrepiece of the hotel, The Lobby Lounge encapsulates the allure of the classic with elements of modernity whilst embracing its heritage setting. By day, the sun-kissed space makes for an ideal setting for a leisurely Afternoon Tea experience, and evolves into a charming backdrop for a wind down with exquisite wines and cocktails in the evening.



SUSTAINABILITY



IHG GREEN ENGAGE

InterContinental Singapore is dedicated to sustainability as an integral part of our Responsible Business commitment. The IHG Green Engage™ system is in place to monitor consumption data and manage our environmental impact, focusing on reducing energy, water, and waste usage.

Committed to Singapore's '30 by 30' vision, the hotel actively work to reduce our carbon footprint as a business. Efforts encompass energy-efficient lighting, demand-controlled air conditioning, intelligent building management, and sustainable procurement.

Additionally, fresh ingredients from local farmers are sourced in effort to support local agriculture; ensuring farm-to-table dining experiences within dining outlets. 100% biodegradable coffee capsules in guest rooms through a partnership with Julius Meinl.

The 'IHG Green Stay' program encourages eco-conscious choices by allowing guests to reduce housekeeping services and earn 500 reward points per day in support of environmental conservation.

MEETINGS & EVENTS











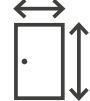
With state-of-the-art facilities and elegantly-appointed spaces with natural daylight, InterContinental Singapore is one of the top choices for corporate or social events in Singapore by meeting planners. A range of 11 versatile rooms featuring over 1,000 square metres of conference and function space include:

- State-of-the-art audio-visual facilities including premium LCD projectors, screens and speakers
- Video conferencing equipment
- Expert on-site audio visual team and meetings specialists
- High-speed internet access
- InterContinental Meetings collection including authentic Singapore experiences



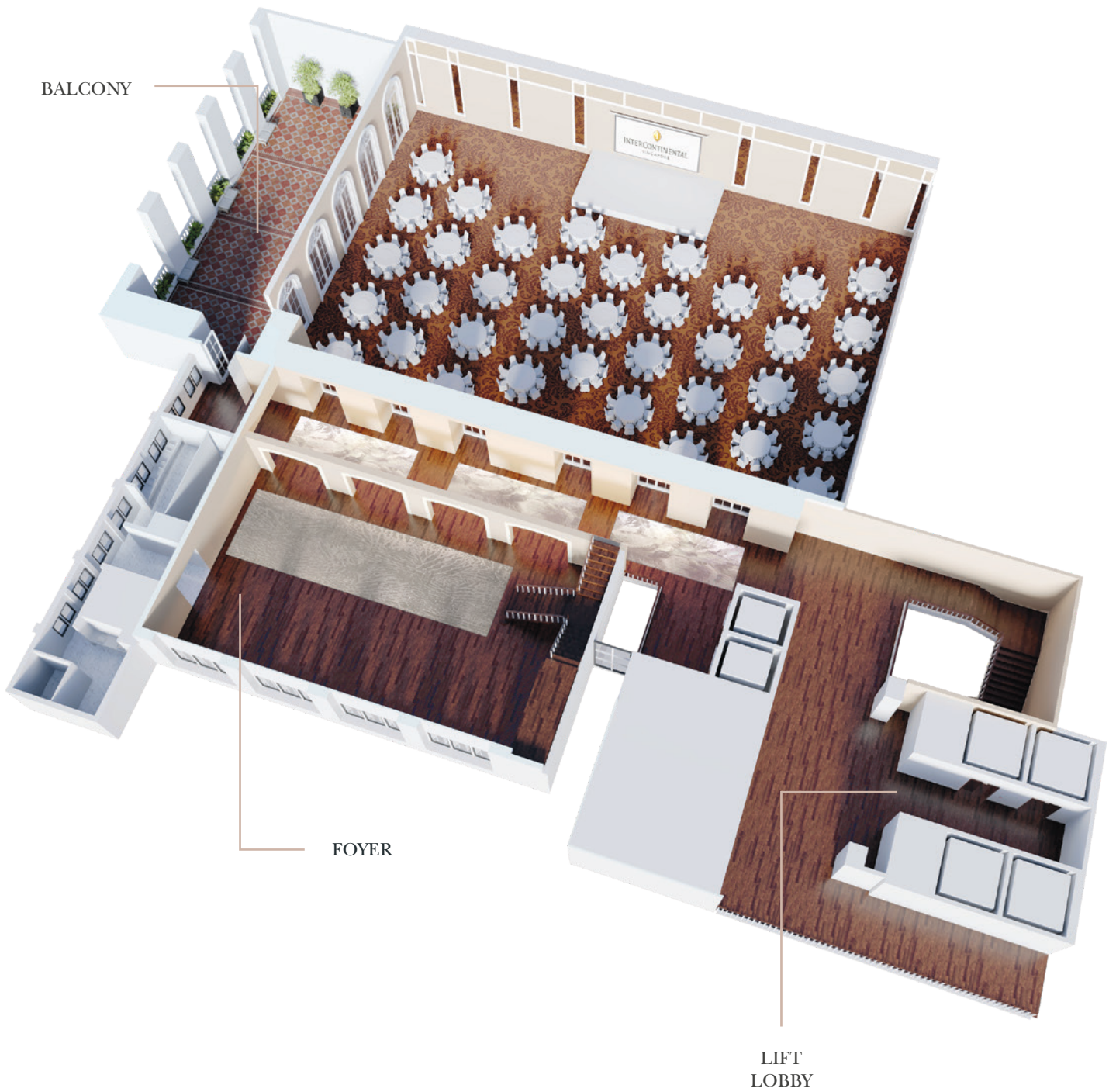
MEETINGS & EVENTS



| | Level |  Theatre |  Classroom |  Reception |  Banquet |  Boardroom |  Area m ² |  Dimension |  Height |  Door h/w |
|--|-------------|---|---|---|---|--|---|---|--|--|
| Grand Ballroom (Combination of below) | 2 | 500 | 280 | 450 | 400 | - | 540 | 19.5 x 27.75 | 5.9 | 2.4 x 0.9 |
| Ballroom 1 | 2 | 150 | 96 | 130 | 120 | 32 | 180 | 19.5 x 9.25 | 5.9 | 2.4 x 0.9 |
| Ballroom II | 2 | 150 | 96 | 130 | 120 | 32 | 180 | 19.5 x 9.25 | 5.9 | 2.4 x 0.9 |
| Ballroom III | 2 | 150 | 96 | 130 | 120 | 32 | 180 | 19.5 x 9.25 | 5.9 | 2.4 x 0.9 |
| Bras Basah Rooms (Combination of below) | 3 | 120 | 72 | 120 | 100 | 32 | 163 | 7.75 x 21.0 | 2.8 | 2.1 x 0.9 |
| Bras Basah I | 3 | 40 | 24 | 40 | 40 | 17 | 58 | 7.75 x 7.5 | 2.8 | 2.1 x 0.9 |
| Bras Basah II | 3 | 40 | 27 | 40 | 40 | 17 | 62 | 7.75 x 8.0 | 2.8 | 2.1 x 0.9 |
| Bras Basah III | 3 | 30 | 18 | 20 | 20 | 14 | 43 | 7.75 x 5.5 | 2.8 | 2.1 x 0.9 |
| The Vault (Combination of below) | Lower Lobby | 120 | 72 | 120 | 120 | 30 | 206 | - | 2.8 | 2.2 x 0.9 |
| Vault I | Lower Lobby | 24 | 18 | 20 | 20 | 14 | 56 | 9.60 x 5.85 | 2.8 | 2.2 x 0.9 |
| Vault II | Lower Lobby | 30 | 18 | 30 | 30 | 14 | 57 | 8.45 x 6.75 | 2.8 | 2.2 x 0.9 |
| Vault III | Lower Lobby | 48 | 30 | 40 | 50 | 21 | 93 | 12.1 x 7.7 | 2.8 | 2.2 x 0.9 |
| Boardroom | 3 | - | - | - | - | 10 | 32 | 7.5 x 4.25 | 2.8 | 2.1 x 0.9 |
| The Library | 11 | 40 | 18 | 30 | 40 | 18 | 68.4 | 7.6 x 9.0 | 2.9 | 2.1 x 0.9 |

PLAN & DETAILS

LEVEL 2, GRAND BALLROOM



PLAN & DETAILS

LEVEL 3, BRAS BASAH ROOMS



PLAN & DETAILS

LEVEL 11, THE LIBRARY

LIFT LOBBY





InterContinental Singapore
80 Middle Road, Singapore 188966

singapore@ihg.com
T: +65 6338 7600

singapore.intercontinental.com